

Annual Review 2016-2017

for

Possum Brush Quarry



Prepared in conjunction with:

R.W. CORKERY & CO. PTY. LIMITED

September 2017

This page has intentionally been left blank



ABN: 45 050 224 250

Annual Review 2016-2017

for

Possum Brush Quarry

Prepared by:

Pacific Blue Metal Pty Ltd
ABN: 45 050 224 250
Possum Brush Rd
POSSUM BRUSH NSW 2430

Telephone: (02) 6554 3206
Facsimile: (02) 6554 3250
Email: charlie@pacificbluemetal.com.au

In conjunction with:

R.W. Corkery & Co. Pty. Limited
Geological & Environmental Consultants
ABN: 31 002 033 712

Brooklyn Office:

1st Floor, 12 Dangar Road
PO Box 239
BROOKLYN NSW 2083

Orange Office:

62 Hill Street
ORANGE NSW 2800

Brisbane Office:

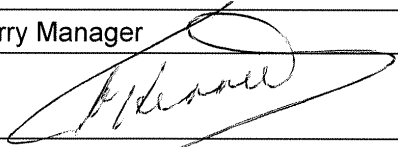
Suite 5, Building 3
Pine Rivers Office Park
205 Leitchs Road
BRENDAL QLD 4500

Telephone: (02) 9985 8511
Facsimile: (02) 6361 3622
Email: brooklyn@rwcorkery.com

Telephone: (02) 6362 5411
Facsimile: (02) 6361 3622
Email: orange@rwcorkery.com

Telephone: (07) 3205 5400
Facsimile: (02) 6361 3622
Email: brisbane@rwcorkery.com

Table 1
Title Block

Name of operation	Possum Brush Quarry
Name of operator	Pacific Blue Metal Pty Ltd
Development consent / project approval #	DA283/97 (Mod 4)
Name of holder of development consent / project approval	Pacific Blue Metal Pty Ltd
Mining Lease #	Not Applicable
Name of holder of mining lease	Not Applicable
Water licence #	Not Applicable
Name of holder of water licence	Not Applicable
MOP/RMP start date	Not Applicable
MOP/RMP end date	Not Applicable
Annual Review start date	1 July 2016
Annual Review end date	30 June 2017
<p>I, Charlie Kennett, certify that this audit report is a true and accurate record of the compliance status of the Possum Brush Quarry for the period 1 July 2016 to 30 June 2017 and that I am authorised to make this statement of behalf of Pacific Blue Metal Pty Ltd.</p> <p><i>Note.</i></p> <p>a) <i>The Annual Review is an 'environmental audit' for the purposes of section 122B(2) of the Environmental Planning and Assessment Act 1979. Section 122E provides that a person must not include false or misleading information (or provide information for inclusion in) an audit report produced to the Minister in connection with an environmental audit if the person knows that the information is false or misleading in a material respect. The maximum penalty is, in the case of a corporation, \$1 million and for an individual, \$250,000.</i></p> <p>b) <i>The Crimes Act 1900 contains other offences relating to false and misleading information: Section 192G (Intention to defraud by false or misleading statement – maximum penalty 5 years imprisonment); Section 307A, 307B and 307C (false or misleading application/information/documents – maximum penalty 2 years imprisonment or \$22,000, or both).</i></p>	
Name of authorised reporting officer	Mr Charlie Kennett
Title of authorised reporting officer	Quarry Manager
Signature of authorised reporting officer	
Date	28 September 2017

This Copyright is included for the protection of this document

<p style="text-align: center;">COPYRIGHT</p> <p style="text-align: center;">© R.W. Corkery & Co. Pty Limited 2017 and © Pacific Blue Metal Pty Ltd 2017</p> <p style="text-align: center;">All intellectual property and copyright reserved.</p> <p>Apart from any fair dealing for the purpose of private study, research, criticism or review, as permitted under the Copyright Act, 1968, no part of this report may be reproduced, transmitted, stored in a retrieval system or adapted in any form or by any means (electronic, mechanical, photocopying, recording or otherwise) without written permission. Enquiries should be addressed to R.W. Corkery & Co. Pty Limited.</p>
--

CONTENTS

	Page
LIST OF ACRONYMS.....	V
1. STATEMENT OF COMPLIANCE.....	1
2. INTRODUCTION.....	2
2.1 OVERVIEW OF OPERATIONS.....	2
2.2 KEY PERSONNEL CONTACT DETAILS.....	2
3. APPROVALS AND LICENCES.....	3
4. OPERATIONS SUMMARY.....	10
4.1 MINING OPERATIONS.....	10
4.2 OTHER OPERATIONS.....	11
4.3 NEXT REPORTING PERIOD.....	12
5. ACTIONS REQUIRED FROM PREVIOUS ANNUAL REVIEW.....	17
6. ENVIRONMENTAL PERFORMANCE.....	17
6.1 INTRODUCTION.....	17
6.2 NOISE.....	17
6.3 BLASTING.....	20
6.4 AIR QUALITY.....	20
6.5 TRANSPORT.....	21
6.6 WASTE.....	21
7. WATER MANAGEMENT.....	22
8. REHABILITATION.....	23
8.1 REHABILITATION PERFORMANCE DURING THE REPORTING PERIOD.....	23
8.2 REHABILITATION ACTIONS FOR THE NEXT REPORTING PERIOD.....	25
9. COMMUNITY.....	25
9.1 COMMUNITY RELATIONS.....	25
10. INDEPENDENT AUDIT.....	26
11. INCIDENTS AND NON-COMPLIANCES DURING THE REPORTING PERIOD.....	27
12. ACTIVITIES TO BE COMPLETED IN THE NEXT REPORTING PERIOD.....	28

APPENDICES

Appendix 1 Consents Compliance Tables.....	A1-1
Appendix 2 Extractive Materials Return 2016-2017.....	A2-1
Appendix 3 Summary of Quarry Product Transportation Records.....	A3-1



CONTENTS

	Page
FIGURES	
Figure 2.1 Activities Undertaken during 2016-2017 Outside Quarry Area.....	4
Figure 2.2 Activities Undertaken during 2016-2017 Within Quarry Area	5
Figure 4.1 Activities Planned During 2017-2018 Outside Quarry Area	14
Figure 4.2 Activities to be Undertaken During 2017-2018 within Quarry Area	15
Figure 6.1 Monitoring Locations	20
TABLES	
Table 1 Title Block.....	ii
Table 2 Statement of Compliance.....	1
Table 3 Non-compliances	1
Table 4 Production Summary – 2016-2017	10
Table 5 Actions from the Previous Annual Review	17
Table 6 Relevant Environmental Performance Aspects	18
Table 7 Water take	22
Table 8 Summary of Areas Disturbed and Rehabilitation	23
PLATES	
Plate 1 View to the east from part of Extraction Area B.....	7
Plate 2 Area drilled awaiting blasting in Extraction Area B	7
Plate 3 View to the south across Area A Sump towards area of oversize storage.....	7
Plate 4 Area extracted for weathered material in the western side of Area B	7
Plate 5 View to the north across the Processing Plant and stockpiles	8
Plate 6 Pugmill / Wetmix Plant	8
Plate 7 A view to the west towards the Asphalt Plant	8
Plate 8 Waste storage bays in Extraction Area A	8
Plate 9 Wildlife Refuge	9
Plate 10 50m Buffer Zone on northern side of Quarry	9
Plate 11 Scour protection material placed adjacent to Access Road	9
Plate 12 Dam 3.....	9
Plate 13 Rudders Box Growth.....	24

LIST OF ACRONYMS

AHD	Australian Height Datum
ANZECC	Australian and New Zealand Environment and Conservation Council
DPE	Department of Planning and Environment
EMP	Environmental Management Plan
EPL	Environment Protection Licence
NA	Not Applicable
ND	Not Determined
NYA	Not Yet Applicable
PBM	Pacific Blue Metal Pty Ltd

This page has intentionally been left blank



1. STATEMENT OF COMPLIANCE

Pacific Blue Metal Pty Ltd (PBM) operates under Development Consents 283/97 (Mod 4), 1127/2005 and 769/2009 and Environment Protection Licence (EPL) 3393. **Appendix 1** presents four tables paraphrasing the conditions contained within these documents, together with a record of compliance and a brief comment recording the basis for assessing compliance or non-compliance. PBM maintains all relevant documentation on site required to demonstrate compliance. It is noted that the assessment of compliance has been recorded as follows.

Table 2 presents a summary of the assessment of compliance for all conditional requirements included in development consents issued for the Quarry, Asphalt Plant, Recycling Plant and EPL 3393.

Table 2
Statement of Compliance

Were all conditions of the relevant approval(s) complied with?	Yes / No
Possum Brush Quarry (DA 283/97) (Mod 4)	No
Possum Brush Asphalt Plant (DA 1127/2005)	Yes
Possum Brush Recycling Plant (DA 769/2009)	Yes
EPL 3393	Yes

Table 3 presents a summary of the non-compliances during the 2016-2017 reporting period.

Table 3
Non-compliances

Relevant Approval	Condition #	Condition Description (summary)	Compliance Status	Comment	Where Addressed in Annual Review
DA 283/97 Mod 4	Schedule 5 Condition 12	Access to Information. Make certain information publicly available via a website.	<i>Non-compliant</i>	PBM did not have a website prior to this condition. A Website is in development, due to go live by 31 October 2017	Section 11

Compliance Status Key

Risk level	Colour code	Description
High	<i>Non-compliant</i>	Non-compliance with potential for significant environmental consequences, regardless of the likelihood of occurrence.
Medium	<i>Non-compliant</i>	Non-compliance with: <ul style="list-style-type: none"> potential for serious environmental consequences, but is unlikely to occur; or potential for moderate environmental consequences, but is likely to occur.
Low	<i>Non-compliant</i>	Non-compliance with: <ul style="list-style-type: none"> potential for moderate environmental consequences, but is unlikely to occur; or potential for low environmental consequences, but is likely to occur.
Administrative non-compliance	<i>Non-compliant</i>	Only to be applied where the non-compliance does not result in any risk of environmental harm (e.g. submitting a report to government later than required under approval conditions).

2. INTRODUCTION

2.1 OVERVIEW OF OPERATIONS

Throughout the reporting period, the Possum Brush Quarry continued to supply a range of products, primarily for road construction, including the Pacific Highway upgrade and a variety of local road and construction projects. The bulk of the quarry products comprised road pavement materials which were generated within the state-of-the-art pugmill/wetmix plant given its superior quality control features.

Figures 2.1 and **2.2** indicate the areas in which activities were undertaken during the reporting period both outside and within the Quarry Area. **Plates 1** to **12** show various operations and/or features of the Quarry recorded on 21 September 2017. The locations of each photograph are displayed on **Figures 2.1** and **2.2**.

Throughout the reporting period, PBM continued to:

- produce asphalt at the on-site asphalt plant;
- increase the quantity of materials imported for recycling/blending with quarry products; and
- refurbish and rationalise the existing processing plant to improve plant efficiencies and provide safer and more practical access around the plant.

2.2 KEY PERSONNEL CONTACT DETAILS

The contact names, position and phone numbers of key personnel who are responsible for the environmental management of the Quarry are as follows.

Name	Position	24 Hour Contact
Mr Charlie Kennett	Quarry Manager	0428 684 115
Ms Stacey Tyack	QSE Manager	0428 684 547

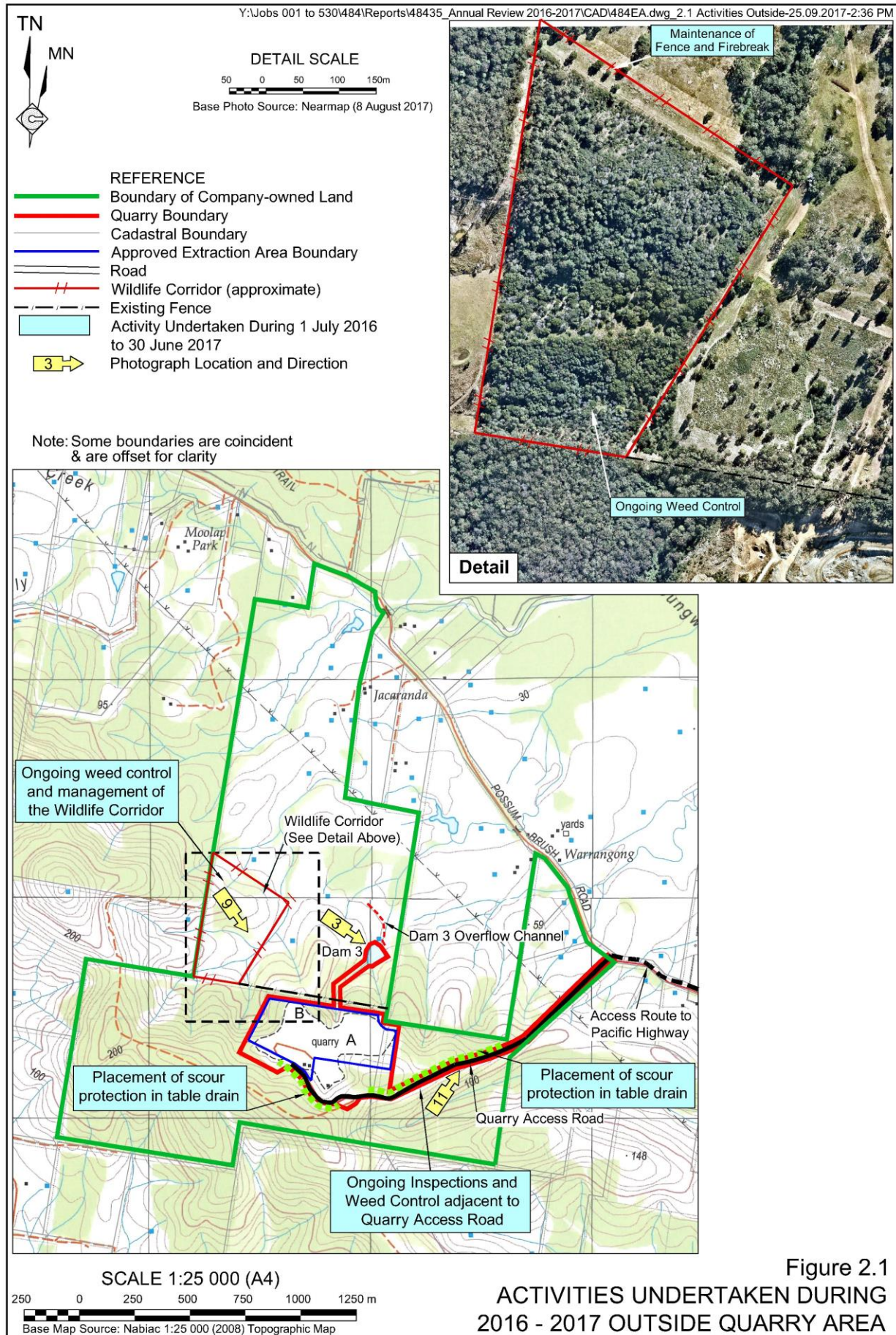
3. APPROVALS AND LICENCES

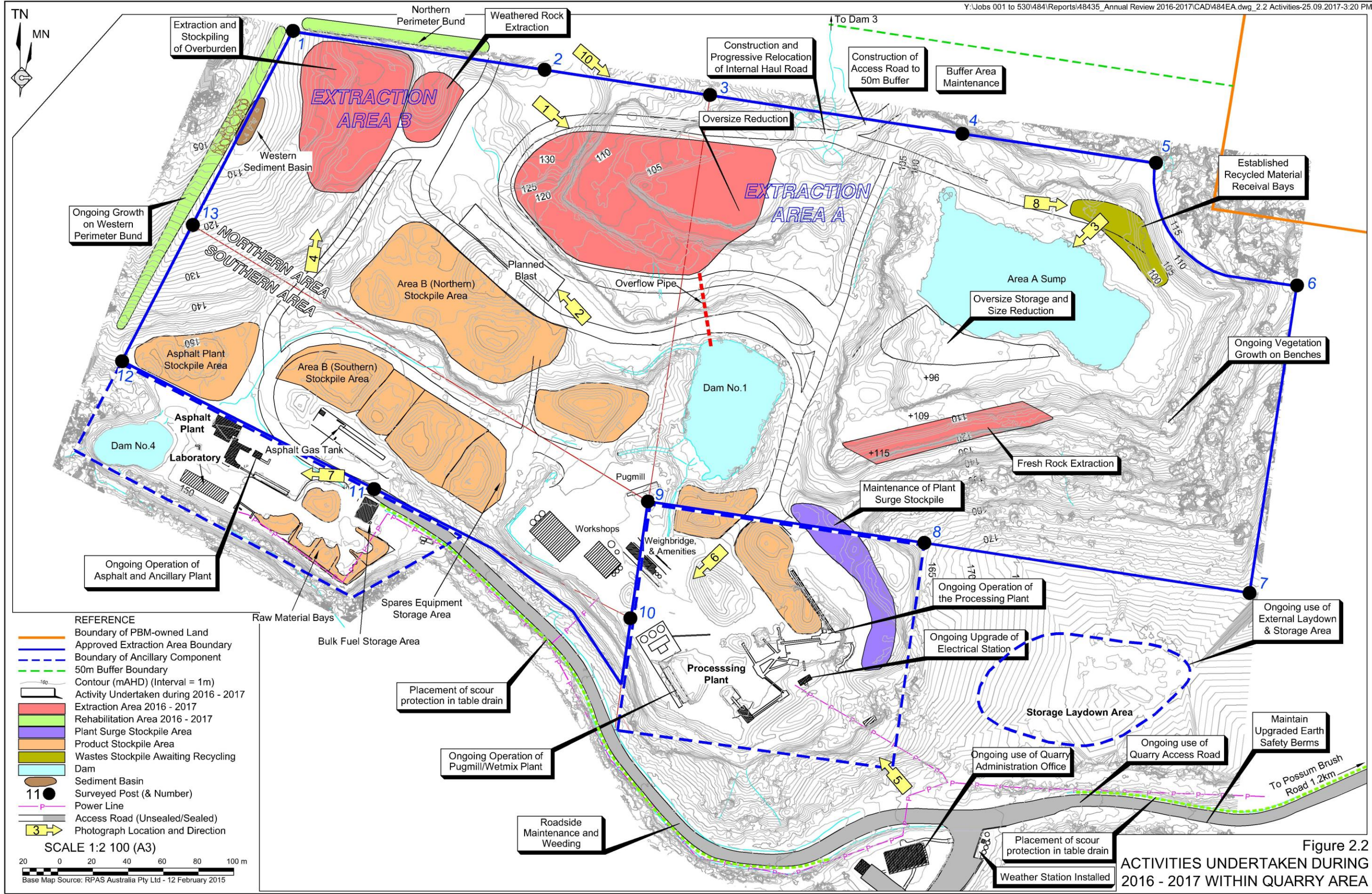
The following approvals and licences are currently held by PBM to operate the Possum Brush Quarry.

- Possum Brush Quarry DA 283/97 (Mod 4)
- Asphalt Plant DA 1127/2005
- Recycling Plant DA769/2009
- Environment Protection Licence (EPL) 3393

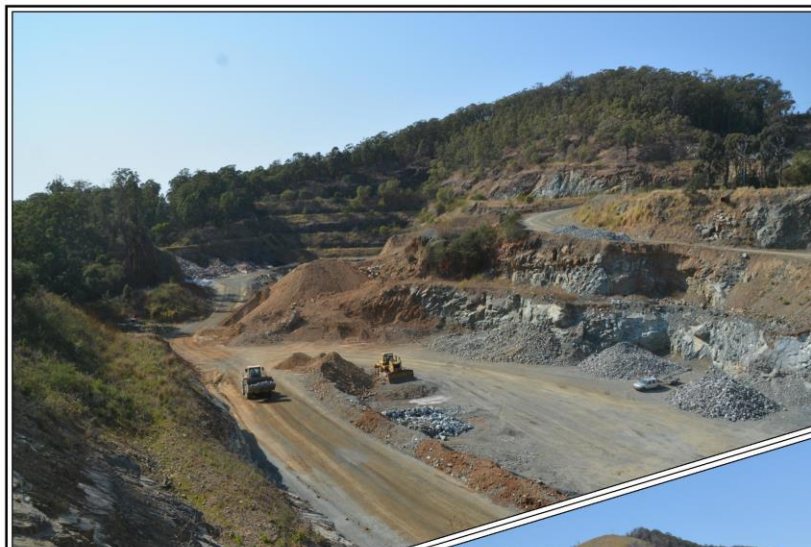
During the reporting period, the only approval to incur a variation was EPL 3393. The EPA issued a licence variation on 31 October 2016 (**Appendix 1**) in which the following minor administrative variation was made.

- *Condition 2.1* was modified to reflect the correct premise boundary to ensure the inclusion of Point 13, as defined within the updated aerial map provided to the EPA on 19/10/2016.





This page has intentionally been left blank



Y:\Jobs 001 to 530\484\Reports\48435_Annual Review
2016-2017\CAD\484EA.dwg_AR Plates-25.09.2017-3.36 PM

Plate 1: View to the east from part of
Extraction Area B
(Note: Area A in background)
(Ref: E484O_033)

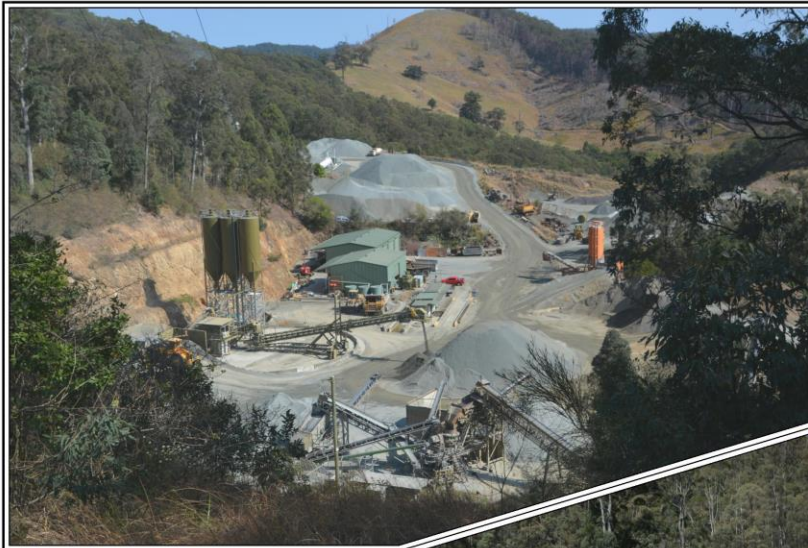
Plate 2: Area drilled awaiting
blasting in Extraction Area B
(Ref: E484O_036)



Plate 3: View to the south across
Area A Sump towards area of
oversize storage
(Ref: E484O_044)

Plate 4: Area extracted for
weathered material in the western
side of Area B
(Ref: E484O_002)





Y:\Jobs 001 to 530\484\Reports\48435_Annual Review
 2016-2017\CAD\484EA.dwg_AR Plates-25.09.2017-3.36 PM

Plate 5: View to the north across the Processing Plant and stockpiles
 (Ref: E484O_066)

Plate 6: Pugmill / Wetmix Plant
 (Ref: E484O_061)

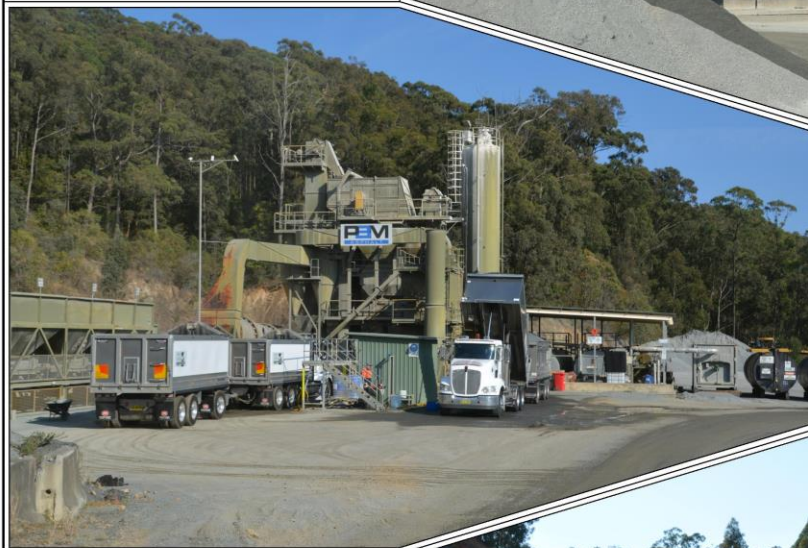


Plate 7: A view to the west towards the Asphalt Plant
 (Ref: E484O_001)

Plate 8: Waste storage bays in Extraction Area A
 (Ref: E484O_041)





Y:\Jobs 001 to 530\484\Reports\48435_Annual Review
2016-2017\CAD\484EA.dwg_AR Plates-25.09.2017-3:56 PM

Plate 9: Wildlife Refuge
(Ref: E484O_010)

Plate 10: 50m Buffer Zone on
northern side of Quarry
(Ref: E484O_028)

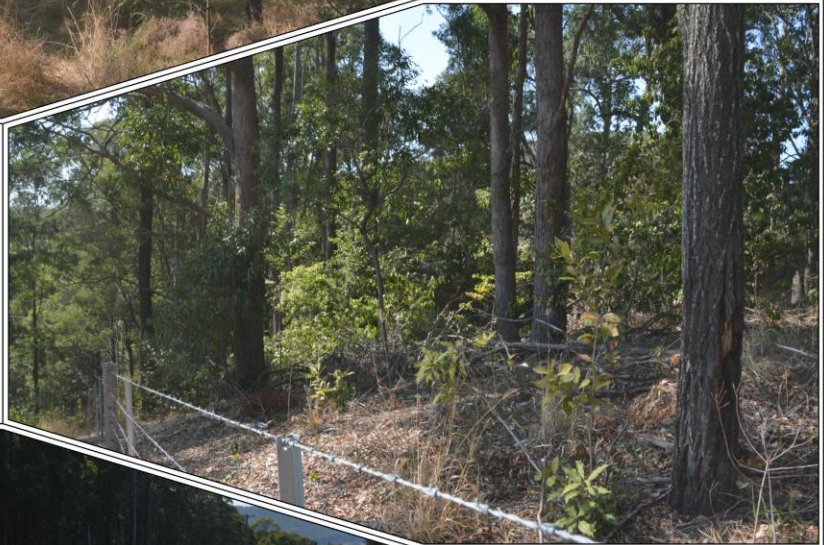


Plate 11: Scour protection material
placed adjacent to Access Road
(Ref: E484O_068)

Plate 12: Dam 3
(Ref: E484O_026)



4. OPERATIONS SUMMARY

4.1 MINING OPERATIONS

Figure 2.2 displays the four locations within the approved extraction areas where materials were extracted during the reporting period.

1. A 0.4ha area on the western side of Area B where weathered rock was removed to a depth of approximately 115m AHD.
2. A 0.9ha area on the northern side of Area B, where predominantly fresh rock was extracted from 130m AHD to 105m AHD benches.
3. A 0.1ha area between locations 1 and 2 where weathered rock was removed; and
4. A 0.2ha area near the southern side of Area A between 120m and 100m AHD.

All extraction throughout the reporting period was undertaken by either ripping with excavators and bulldozers or drill and blast followed by load and haul. **Plates 1 to 4** show the status of the various extraction areas within the Quarry.

Broken and fragmented rock suitable for processing was transported to the processing plant by off-road haul trucks. All oversize rock was either sold as armour rock or transported to protected areas within Area A or Area B for size reduction using a hydraulic hammer. Secondary breakage took place on the 100m AHD level in Area A for five (5) days during the reporting period.

Table 4 presents the production summary for the extraction operations.

Table 4
Production Summary – 2016-2017: tonnes

Material	Approved limit (specify source)	Previous reporting period (actual)	This reporting period (actual)	Next reporting period (forecast)
Waste Rock / Overburden	Not Applicable	0	0	0
ROM Coal Ore	Not Applicable	0	0	0
Coarse reject	Not Applicable	0	0	0
Fine reject (Tailings)	Not Applicable	0	0	0
Saleable Product*	500 000 tonnes / yr	265 483	272 460	250 000
* Saleable product includes all quarry, asphalt and recycling products extracted/processed and sold.				

Since commencement of DA283/97 (Mod 4) on 1 April 2016, a total of 328 694 tonnes of saleable product has been extracted / processed and sold. This includes 56 234 tonnes from 1 April to 30 June 2016 and 272 460 tonnes for 2016-2017.

All extraction activities occurred between 6:30am to 6:00pm on weekdays and 7:00am to 3:00pm on Saturdays, public holidays excluded, i.e. in accordance with *Condition 2(11)* DA 283/97 (Mod 4) and *Condition L6.2* (a-g) EPL 3393.

The bulk of the fragmented rock was processed on site through the processing plant (see **Plate 5**) with the bulk of the products being produced within the state-of-the-art pugmill/wetmix plant (see **Plate 6**).

A copy of the 2016-2017 Return for Extractive Materials submitted to the DRE is presented as **Appendix 2**.

4.2 OTHER OPERATIONS

Asphalt Production

In accordance with *Condition 10* DA1127/205 and *Condition L6.2* (h-i) EPL 3393, the asphalt plant is approved to operate during the standard hours of operation for the Quarry and 24 hours per day from 6:30am Monday to 10:00pm Friday for up to 60 days per year to supply asphalt to community infrastructure projects requiring night-time deliveries of asphalt, a condition that was met throughout the reporting period.

During the reporting period, the asphalt plant operated within the nominated hours including 12 night time operations.

All product despatch activities were undertaken within the nominated standard hours as outlined in DA 283/97 (Mod 4) and night time hours as outlined within DA 1127/2005 and EPL 3393.

Recycled Products

During the reporting period, PBM continued to receive concrete and other waste materials suitable for reprocessing and blending with other quarry products. **Figure 2.2** displays the location of the recycled material receival bays within Extraction Area A (see **Plate 8**). The wastes received comprised:

- asphalt and asphalt profilings;
- clean concrete;
- concrete with minimal contamination; and
- unsorted concrete, brick and tile.

During the reporting period, a total of 2448.46 tonnes of waste materials were received for processing.

In accordance with *Condition L3.2* EPL 3393, the authorised amount of waste brought into the Quarry did not exceed 10 000 tonnes per year. PBM provided monthly Waste and Resource Reports to EPA detailing the tonnage of recycled products received, processed and despatched.

All recycled product receival activities were undertaken within the nominated hours outlined in *Condition 2a* of DA 769/2009 and *Condition L6.3* EPL 33936 and recycling despatch activities as per *Condition 2(11)* DA 283/97 (Mod 4).

PBM operates the recycling facility in accordance with DA 769/2009 under a Quality Assurance program ensuring all operational conditions are met. This includes accepting only licenced uncontaminated wastes, documenting all loads, rejecting unlicensed or contaminated



wastes and notifying Council of such loads. During the 2016-2017 reporting period, implementation of the QA program ensured all operational conditions of DA 769/2009 were fully adhered to.

Off-site Road Maintenance

Monthly payments were made to Council throughout the reporting period for the maintenance of Possum Brush Road in accordance with *Condition 2(20)* of Development Consent 283/97. A total of \$28 970.67 was paid to Council for the products despatched during the reporting period.

In accordance with *Condition 2(19)*, extractive material is to be supplied to Council free of charge for the maintenance of Possum Brush Road between the quarry entrance and the Pacific Highway. During the 2016-2017 reporting period, Council requested only one (1) tonne of asphalt for minor road repairs along Possum Brush Road.

On-site Road Maintenance

No maintenance of the road pavement surface within the Quarry Site or along the access road was required given it has been surfaced with asphalt. PBM upgraded the roadside drainage in the area displayed on **Figure 2.1**, principally through the placement of suitably sized scour protection material (see **Plate 11**).

Meteorological Monitoring

During the reporting period, PBM installed a meteorological station near the Quarry Administration Office to record the parameters nominated in *Condition M4.2* of EPL 3393, namely:

- rainfall;
- wind speed and direction @ 10m;
- temperature @ 2m and 10m; and
- sigma theta @ 10m.

The monitoring station commenced operating on 19 January 2017.

4.3 NEXT REPORTING PERIOD

The principal activities planned during 2017-2018 are listed below. The locations of these activities are shown on **Figures 4.1** and **4.2**.

Extraction Activities

PBM expects the demand for roadbase products will continue during 2017-2018, particularly given the high quality of products produced within the pugmill/wetmix plant. Fresh rock reserves will be removed from extraction faces in Areas A and B with sufficient weathered rock extracted for blending with the fresh rock for the required products.

Extraction will focus in the area straddling the boundary between Areas A and B with a continued emphasis placed upon creating an improved (and safer) internal haul road from the lower sections of Area A to the processing plant.

Processing Activities

PBM will continue to use the refurbished processing plant and pugmill/wetmix plant to produce its products. Further refurbishment will be undertaken during the 2017-2018 reporting period.

The progressive upgrade of the electrical substation will also continue to be undertaken throughout the 2017-2018 reporting period.

Asphalt Production

PBM intends to continue to operate the asphalt plant, at a higher output level to that produced during 2016-2017 reporting period, to supply asphalt products to a range of projects throughout the region.

Product Despatch and Road Maintenance

No substantial changes are planned to occur in the transportation of quarry products from the Quarry during 2017-2018.

PBM will draw Council's attention to any areas requiring maintenance along Possum Brush Road.

Rehabilitation

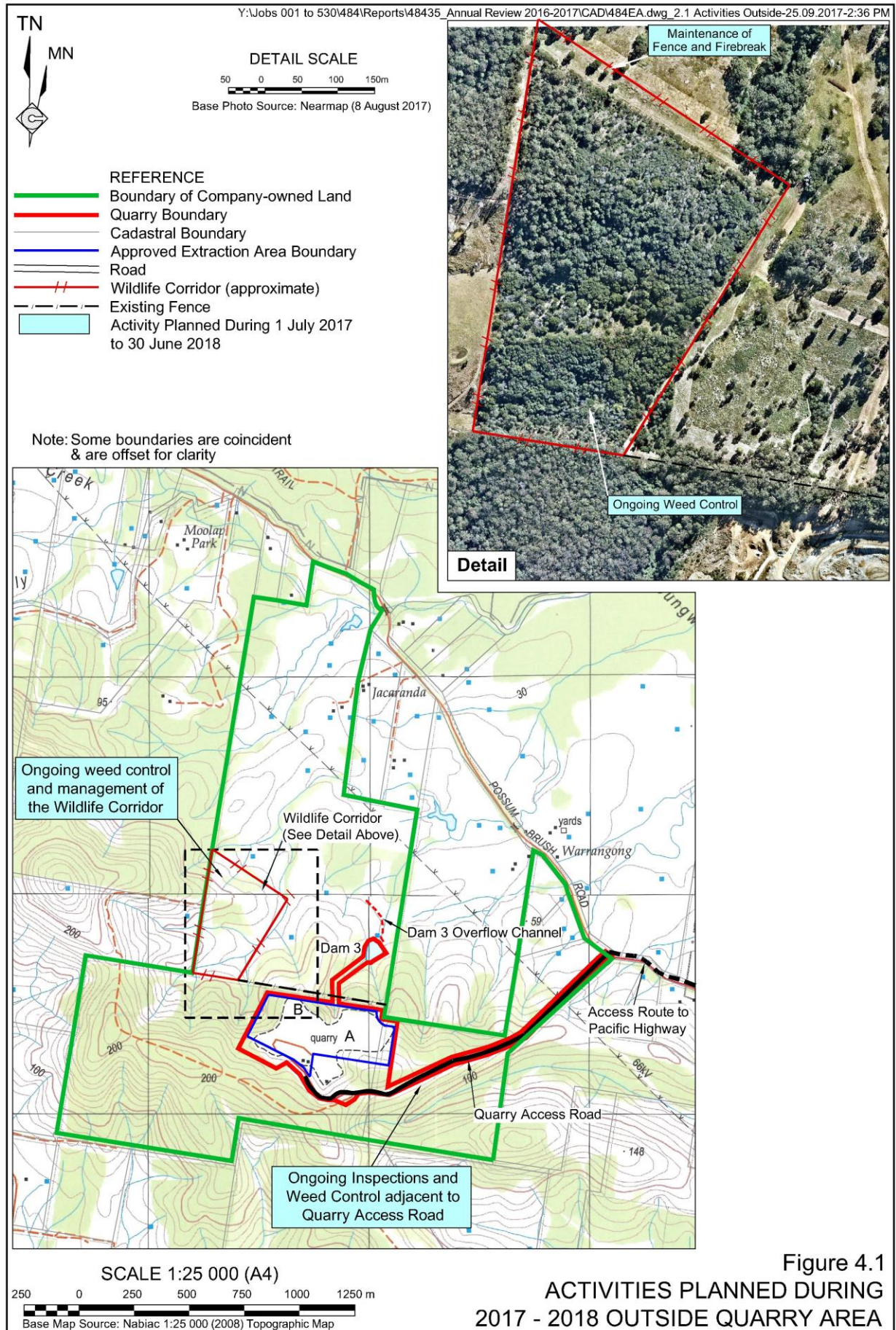
Continued weeding and maintenance of vegetation planted within both the 50m buffer and Wildlife Corridor will take place during 2017-2018. Natural regeneration of the completed batters in Area A will continue to enhance these developing vegetation communities. The western perimeter bund in Area B, which was seeding and stabilised in previous years, will continue to be maintained.

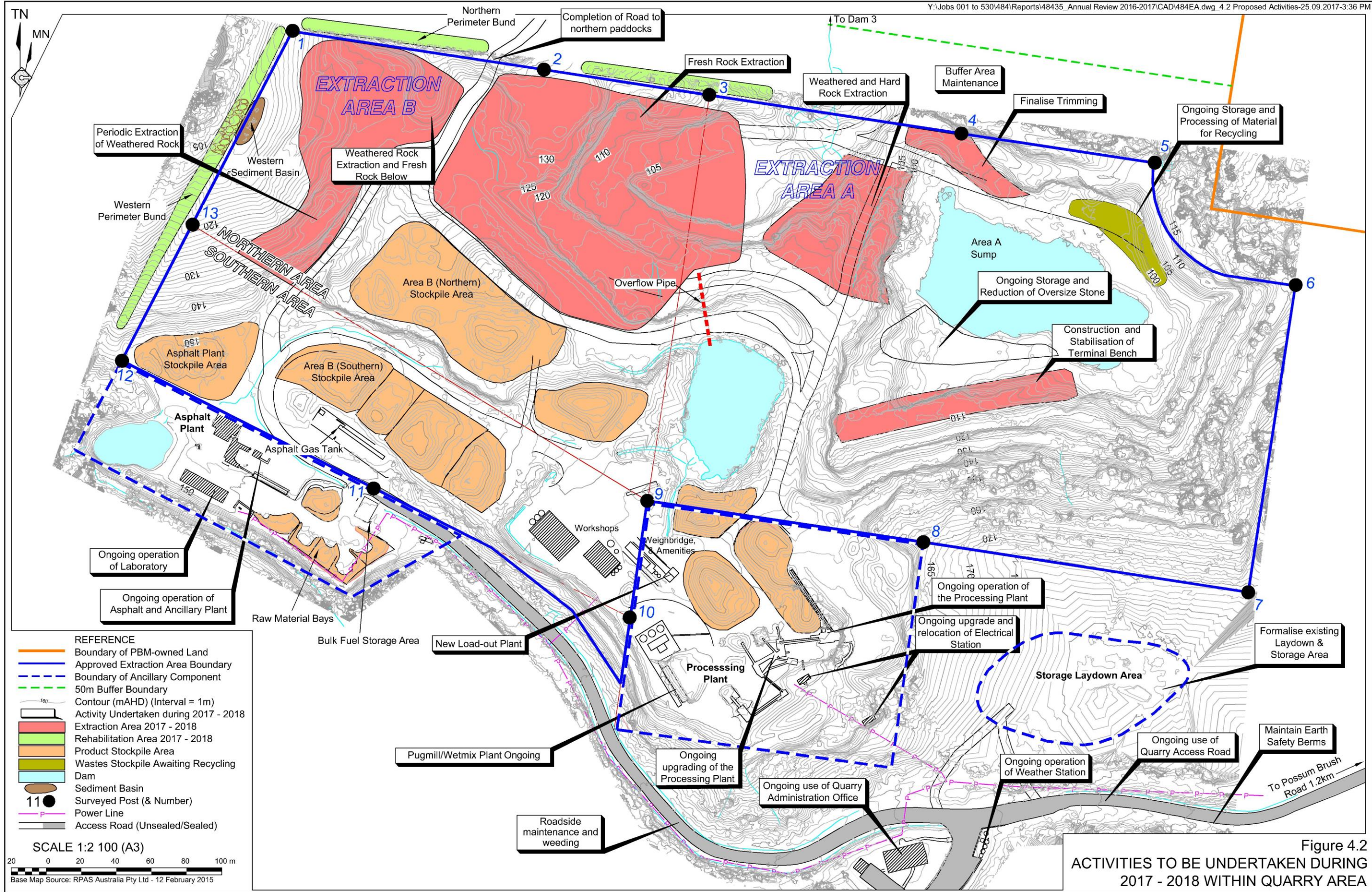
Environmental Monitoring

The monitoring activities currently undertaken within and surrounding the Quarry will remain in place throughout 2017-2018. The monitoring proposed during 2017-2018 will include:

- blast monitoring (each blast);
- weather-related monitoring including rainfall levels (daily);
- deposited dust monitoring (monthly);
- water quality Dam 3 (if Dam 3 overflows);
- noise monitoring in accordance with the Development Consent DA283/97 Mod 4 and EPL 3393 conditions.

PBM proposes to continue to review all monitoring results as they are received to ensure the measured parameters are within the relevant limits or criteria. All monitoring results collected during 2017-2018 will be assembled in conjunction with all previous relevant results to provide the basis for an ongoing review of the environmental performance of the Quarry.





This page has intentionally been left blank

This page has intentionally been left blank

5. ACTIONS REQUIRED FROM PREVIOUS ANNUAL REVIEW

Table 5 lists no actions were required arising from the previous Annual Review, i.e. from 1 April 2016 to 30 June 2016. Neither DPE, Council nor any agency requested PBM to undertake any actions during the reporting period.

Table 5
Actions from the Previous Annual Review

Action Required from Previous Annual Review	Requested by	Action Taken by the Operator	Where Discussed in Annual Review
nil			

6. ENVIRONMENTAL PERFORMANCE

6.1 INTRODUCTION

Within the Quarry Site itself, the standard of environmental management has remained high with an excellent standard of housekeeping. Such standards, and the compliant monitoring results, reflect that the adopted environmental controls set out in the various Management Plans are effective.

Sections 6.1 to 6.5 provide a summary of the environmental outcomes associated with the operation of the Possum Brush Quarry. **Table 6** provides a summary analyses of environmental monitoring data (excluding Water and Rehabilitation which are detailed in the Sections 7 and 8 respectively).

A summary of monitoring data collected to demonstrate PBM's environmental performance with respect to the Possum Brush Quarry is posted on PBM's website.

6.2 NOISE

Noise monitoring covering the day, evening and night periods was undertaken during October and November 2016 at three locations (see **Figure 6.1**).

- Site 1: 5 St Peters Close;
- Site 2: 175 Possum Brush Road; and
- Site 3: 55 Possum Brush Road.

At all sites, birds and distant traffic (on the Pacific Highway) were the main contributors to the noise levels recorded. The monitoring results demonstrated that noise emissions from the quarry did not exceed the relevant noise criteria at any monitoring location at any time during the surveys. Night time monitoring also revealed that the measured noise, did not exceed the sleep disturbance criterion during the monitoring period.

Table 6
Relevant Environmental Performance Aspects

Page 1 of 2

Aspect	Approval Criteria / Limit nominated in EIS				Performance during the Reporting Period	Trend / Key Management Implications	Implemented / Proposed Management Actions
Noise					Noise monitoring was undertaken during October and November 2016 to determined compliance with the day, evening and night noise limits.	Quarry operations continue to be within the defined noise limits for the quarry.	Implementation of Noise Management Plan and Transport Management Plan to achieve continued compliance.
		Day / Evening	Night				
	Receiver	LAeq (15 min)	LAeq (15 min)	LA1 (max)			
	R1 5 St Peters Close	39	39	45			
	R2 175 Possum Brush Rd	38	38	45			
	R3 55 Possum Brush Rd	37	37	45			
	All other residences	35	35	45			

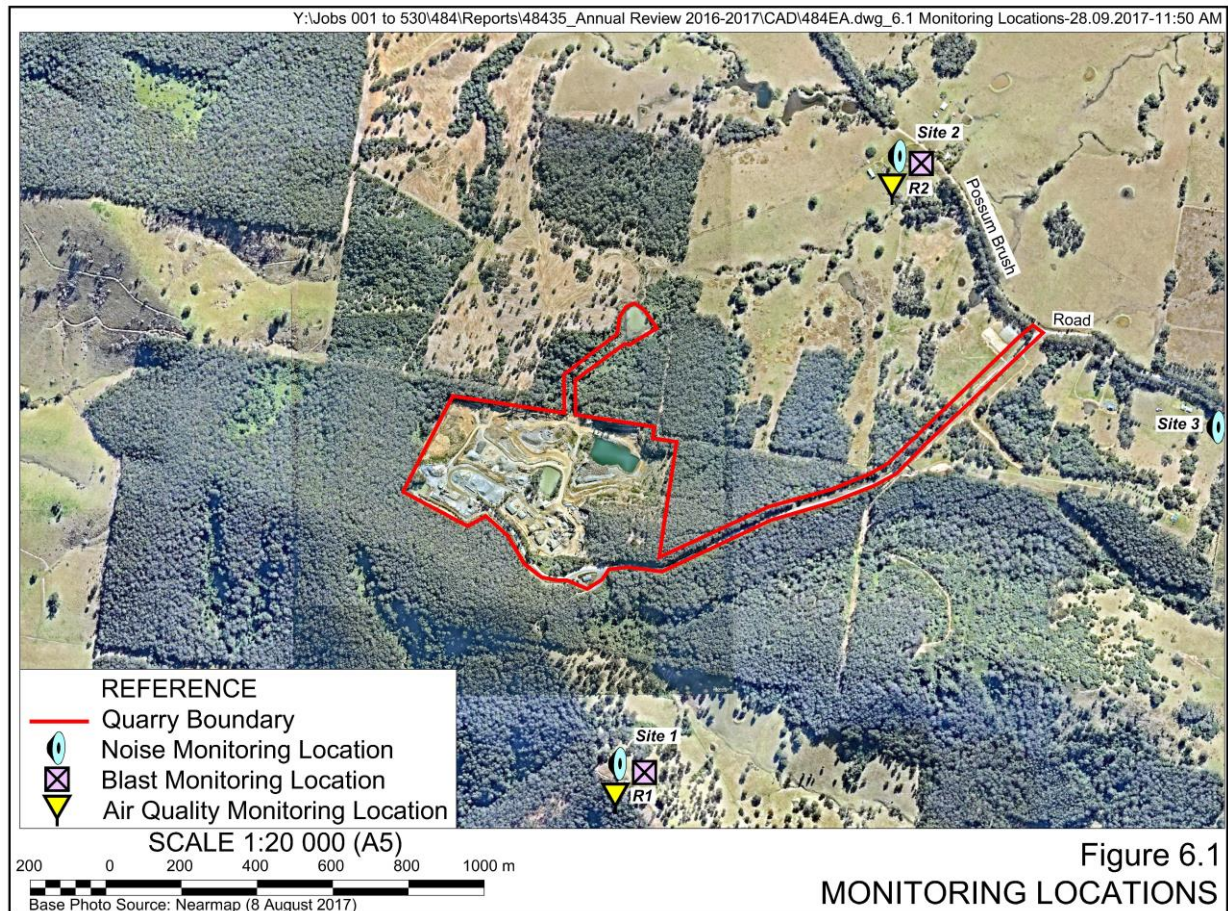




Table 6 (Cont'd)
Relevant Environmental Performance Aspects

Page 2 of 2

Aspect	Approval Criteria / Limit nominated in EIS				Performance during the Reporting Period	Trend / Key Management Implications	Implemented / Proposed Management Actions
Blasting		Air Blast Over-pressure (dB(Lin Peak))	Ground Vibration (mm/s)	Allowable Exceedance	Blasting occurred on six (6) occasions during the reporting period. <ul style="list-style-type: none"> Airblast levels recorded at Residence 1 ranged from 96.3dB(L) to 101.8dB(L) with recorded ground vibration levels varying from 0.14mm/s to 2.61mm/s. Airblast levels recorded at Residence 2 ranged from no trigger to 107.0dB(L) with recorded ground vibration levels varying from no trigger to 0.50mm/s. 	Blasting continues to be well within the defined blasting limits for the quarry.	Implementation of Blast Management Plan to achieve continued compliance.
	Any residence on privately owned land	120	10	0%			
		115	5	5% of the total number of blasts over a period of 12 months			
Transport	No more than 36 truck movement per hour (one way movements)				The maximum number of one way truck movements per hour was 36, between 7.30am-8.30am on 4 May 2017.	These figures are comparative to previous years. Average number of truck movement per hour was 4.5.	Implementation of Transport Management Plan to achieve continued compliance.
	No more than 420 truck movements per day (one way movements)				The maximum number of one way truck movements per day was 232, which occurred on 31 May 2017.	These figures are comparative to previous years. Average number of truck movements per day was 79.	Implementation of Transport Management Plan to achieve continued compliance.



6.3 BLASTING

A total of six (6) blasts were initiated during the reporting period. All blasts were monitored at Residences R1 (5 St Peters Close) and R2 (175 Possum Brush Road) (see **Figure 6.1**) and were within the airblast overpressure and ground vibration criteria nominated within EPL 3393.

Airblast levels recorded at Residence 1 ranged from 96.3dB(L) to 101.8dB(L) with recorded ground vibration levels varying from 0.14mm/s to 2.61mm/s. Airblast levels recorded at Residence 2 ranged from no trigger to 107.0dB(L) with recorded ground vibration levels varying from no trigger to 0.50mm/s.

No complaints were received regarding blasting throughout the reporting period.

6.4 AIR QUALITY

The PBM Air Quality Management Plan was approved by the DPE on 21 July 2017 (outside of this reporting period). Included in the Air Quality Management Plan is a monthly Dust Monitoring program located at Residences R1 (5 St Peters Close) and R2 (175 Possum Brush Road) (see **Figure 1.1**). Dust monitoring data will be analysed and presented in the 2017-2018 Annual Review.

6.5 TRANSPORT

PBM records both the number of heavy vehicles transporting quarry products from the Quarry and the number of laden trucks entering the Quarry with raw materials for the asphalt plant or waste materials for recycling. Information is recorded on an hourly and daily basis in order to demonstrate compliance with *Conditions 2(9) and 2(10) DA 283/97*.

Condition 2(9) DA 283/97 stipulates a maximum of 500 000 tonnes of quarry products may be transported from the Quarry in any calendar year. In the 2016-2017 year, 272 460 tonnes of quarry products (including asphalt and recycled products) were transported from the Quarry.

Condition 2(10) DA 283/97 stipulates PBM must ensure that no more than 36 truck movements occur per hour and no more than 420 truck movements occur per day. A truck movement is defined as heavy vehicle one-way trip, either entering or leaving the Quarry, including trucks associated with the asphalt and recycling activities. During the reporting period, the maximum number of truck movements was 36 per hour (7.30am – 8.30am 4 May 2017) and 232 per day (31 May 2017). A summary of the maximum number of hourly and daily truck movements for each calendar month throughout the reporting period is presented in **Appendix 3**. The comprehensive records of all truck movements are held in the Quarry Administration Office.

6.6 WASTE

PBM's approach to waste management is based upon three main principles, namely to:

1. minimise the quantity of waste generated;
2. maximise the quantity of waste recycled; and
3. effectively manage and correctly remove all waste from the Quarry.

The wastes generated within the Quarry include:

- domestic type wastes and workshop wastes that are stored in approved containers and transported regularly to either a recycling facility or approved waste disposal facility;
- tyres for recycling are stored on site and regularly transported to a licenced recycling facility;
- sullage wastes and septic wastes from staff amenities which are discharged into an approved septic tank with pump-out facilities; and
- stormwater potentially contaminated with petroleum products which drains to a proprietary oil/water separator in the workshop from which clarified water is allowed to drain to the sedimentation pond system. Oil-contaminated fluids are collected by a licensed recycling contractor for disposal.

PBM maximises waste collected for recycling on site including steel, waste oil, paper and cardboard, glass and aluminium containers.

7. WATER MANAGEMENT

The PBM Water Monitoring point is located at the overflow of Dam 3 (see **Figure 2.1**). Monitoring is required at this point when an overflow event occurs as per EPL 3393 *Condition M2*. EPL 3393 *Condition L2.5* stipulates the Water concentration limits for pollutants at the overflow, these being:

- pH 6.5-8.5
- TSS <50 mg/L
- Oil and Grease None visible

Water quality monitoring was undertaken on two (2) occasions during the reporting period, namely 03/08/16 and 15/03/17. There was no visible oil and grease observed at either time of sampling. Both pH and TSS levels were within the limits nominated in EPL 3393, the pH range was 7.0-7.1 and TSS range was 7.1-19mg/L

PBM does not hold or is required to hold any licence under the provisions of the *Water Act 1912* or the *Water Management Act 2000* (**Table 7**).

Table 7
Water take

Water Licence #	Water Sharing Plan, Source and Management Zone (as applicable)	Entitlement	Passive Take / Inflows	Active Pumping	Total
n/a					

8. REHABILITATION

8.1 REHABILITATION PERFORMANCE DURING THE REPORTING PERIOD

Rehabilitation activities are undertaken within a range of areas within the Quarry through Irreplaceable Bush Regeneration Indigenous Services (IBIS). **Table 8** provides a summary of the disturbance and rehabilitation areas.

Table 8
Summary of Areas Disturbed and Rehabilitation

Quarry Area Type	Previous Reporting Period (Actual)	This Reporting Period (Actual)	Next Reporting Period (Forecast)
Total quarry footprint	45ha	45ha	45ha
Total active disturbance	27ha	27ha	27ha
Land being prepared for rehabilitation	0	0	0
Land under active rehabilitation	18ha	18ha	18ha
Completed rehabilitation	1ha	1ha	1ha

Quarry Access Road

Roadside vegetation maintenance and weed spraying continued throughout the reporting period, as required.

Area A

Ongoing vegetation growth occurred on the southern and eastern extraction faces throughout the reporting period.

Area B

The vegetation on the western perimeter bund continued to flourish during the reporting period.

Wildlife Corridor

During the 2016-2017 reporting period, stock exclusion fencing of the wildlife corridor was maintained and secondary weeding continued to be undertaken by Mr Tim Wray of Irreplaceable Bush Regeneration Indigenous Services Pty Ltd (IBIS). The ongoing suppression of the lantana within the corridor is almost complete which has allowed the increased use of the corridor by native wildlife. **Plate 9** displays the greater density of vegetation within the wildlife corridor whilst **Plate 13** displays the successful growth of the endangered Rudders Box within the wildlife corridor, i.e. since the planting of the tubestock in 1999.

50m Buffer Zone

Primary and secondary weeding continued within the buffer zone during the reporting period. The densities of the two major weeds within the buffer zone, Lantana and White Passionfruit, were further reduced within the buffer zone during the reporting period.

Plate 13 Rudders Box Growth



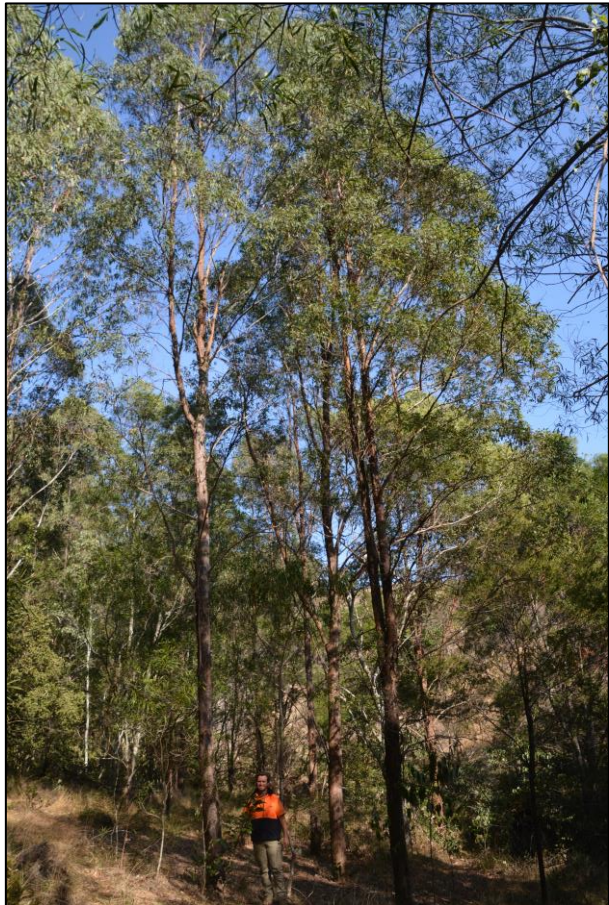
2003



2007



2011



2017

Weeds

Visual inspections and monitoring of weeds within the 50m Buffer Zone and Wildlife Corridor was undertaken, as well as primary and secondary weeding activities completed by and reported upon by Mr Tim Wray of IBIS.

8.2 REHABILITATION ACTIONS FOR THE NEXT REPORTING PERIOD

Weeding and maintenance of vegetation planted within both the 50m buffer and wildlife corridor will continue throughout 2017-2018. Natural regeneration of the completed batters in Area A will continue to enhance these developing vegetation communities. The western perimeter bund in Area B, which was seeding and stabilised in previous years, will continue to be maintained.

9. COMMUNITY

9.1 COMMUNITY RELATIONS

Three (3) complaints were received during the 2016-2017 reporting period. Two (2) complaints from the same resident regarding squealing brakes, and another complaint regarding the noise associated with the start-up of the asphalt plant. This compares to one complaint in the 2015-2016 year and zero complaints in the 2014-2015 year.

The one complaint in 2015-2016 and two of the complaints in 2016-2017 originated from the same resident regarding squealing brakes. PBM has actively addressed the issue, checking and adjusting brakes where necessary, tool boxing drivers and updating our Driver's Code of Conduct to include quiet night time driving protocols are implemented at all times past this resident's address. At all times, PBM has stayed in communication with the resident as well as informing Mid Coast Council and EPA of the communications and actions taken to address the issue.

The complaint regarding the start-up of the Asphalt Works, applied to only one night in a week of asphalt works. Investigation with the Asphalt Batcher, revealed no change in the plant or procedure for that night. On relaying this information to the complaint, the complainant suggested it was likely carried by the wind on that night, and thanked us for our efforts.

PBM encourages local residents to contact the Quarry Manager directly in the event of a complaint, to assist PBM to be more responsive to specific complaints and the local community.

One (1) annual meeting of the Community Consultative Committee was held during the 2016-2017 reporting period, on 7 December 2016. The CCC is currently in hiatus awaiting the appointment of a new Council representative, post local government elections in September 2017. Minutes of the meeting on 7 December 2016 have not yet been supplied to PBM. Upon receipt, PBM will post the minutes on the Possum Brush Quarry website.

10. INDEPENDENT AUDIT

During the reporting period, PBM underwent an Independent Audit conducted Trevor Brown and Associates in October 2016.

Pacific Blue Metal was assessed during the Independent Environmental Audit as operating generally in compliance with the consolidated conditions of the DA 283/97 Mod 4.

The Independent Auditor provided one recommendation arising from the Independent Environmental Audit, as follows.

“It is recommended that Spectrum Acoustics report the location noise monitoring equipment during the monitoring period in future reports, in accordance with the requirements in EPL Condition L4.6 and provide comment on the requirements in Development Consent 283/97 Appendix 3 Noise Compliance Assessment.”

PBM has addressed this issue and the requirements of EPL 3393 Condition M7.1 by ensuring that all future noise reports include:

- details of the location of the noise monitoring equipment;
- photographic evidence of the noise monitoring equipment in place;
- information on the locations of the noise sources and the relative scale of activity during the period of measurement; and
- comment on the requirements listed in Appendix 3 DA 283/97, including but not limited to detailing the noise measurement equipment used and its conformity to Australian Standards.

In accordance with Condition 5(10), the next Independent Audit will be commissioned in three years' time, that is, by October 2019.

11. INCIDENTS AND NON-COMPLIANCES DURING THE REPORTING PERIOD

No reportable incidents occurred within the Quarry throughout the 2016-2017 reporting period.

PBM's singular non-compliance within the reporting period was an administrative non-compliance of *Condition 5(12)* that is to have certain information publicly available on its website, by 31 December 2016. PBM applied for and was granted an extension of this date to 31 March 2017.

Prior to the imposition of this condition, PBM did not operate a website. Nor did the PBM Business Plan include the provisions and/or resources for the development and maintenance of a company website. The development of a website in this reporting period was an unforeseen and unresourced requirement, of which PBM could not achieve compliance.

During this period, however, PBM did engage a website designer and by 31 March 2017, the compliance pages of PBMs' website were completed. Although the website was not live at this stage, a link to view the website was sent as evidence to DPE.

The website is scheduled to become live with all required information posted by 30 October 2017.

12. ACTIVITIES TO BE COMPLETED IN THE NEXT REPORTING PERIOD

This section focusses upon the measures that PBM will implement during the 2017-2018 reporting period to improve the environmental or community performance of the Quarry's operation.

1. Squealing brakes on product trucks

The program to address the problem of squealing brakes perceived by one resident would continue throughout 2017-2018.

2. Maintenance of Possum Brush Road

PBM intends to draw Council's attention to some small sections of Possum Brush Road that need to be maintained to re-instate the hitherto high quality of the road pavement. Since May 2008, Council has received \$237 128.60 for maintenance of the 1.3km section of Possum Brush Road of which little has been spent to date.

3. Adjustment of Management Plans

PBM has identified through the implementation of the various management plans, since their approval by DPE in July 2017, that a few minor modifications are required for the documents. The proposed modifications relate principally to the following.

- Blast Management Plan

Section 11.3 Methodology - amend to more precisely detail the permanent blast monitoring location at each of the nearby residence, and to record the monitoring equipment at each location with photographic evidence.

- Air Quality Management Plan

Section 11.8 Meteorological Monitoring - insert location of newly installed meteorological station (and amend other sections where reference is made to the future installation of the station).

- Noise Management Plan

11.3.3 Methodology – include the statement that the DPE Noise Monitoring frequency in DA 283/97 (Mod4) is inconsistent with the EPL 3393. After 12 months of quarterly monitoring, and as per *Condition 3(4)*, PBM will make a submission to the Secretary to amend the Development Consent to align with the EPL conditions for noise monitoring.

- Landscape and Rehabilitation Management Plan

Section 12 Rehabilitation Objectives – amend the long-term objectives to reflect the use of the quarry as an integral component of the agricultural enterprises across PBM's property beyond the end of quarry life. This may include the retention of some surface infrastructure relevant to the agricultural business, subject to the Secretary's approval as per *Condition 3(19)*.